

B'Sue Boutiques 2nd Annual Workshop

Beading Jewelry Class

Instructors: Marcia Tuzzolino & Irene Hoffman



Fleur Romantique Pendant



MATERIALS:

- 1 - Brass Pendant, flower style, 46mm, BLK09033, RB01552, Brox02296, fil01844, and satin matte or raw brass
- 1 - 13mm x 8mm oval faceted flat back Cabachon, or flat back oval Pearl
- 8 - 3mm glass Rondelles
- Size 11 and size 15 seed beads in one or two coordinating/contrasting colors.
(Seed beads are referred to in these instructions as s11 and s15)

TOOLS:

- Size 12 beading needles
- 3 Feet Fireline thread in white or black
- Beading Mat
- Sewing Scissors

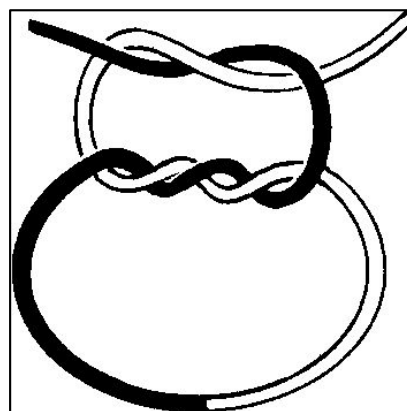


- 1 Begin by cutting a 3 foot piece of Fireline and thread onto the beading needle.
- 2 Tie the loose end of the thread onto the top petal making two surgeon's knot, 2 times.

1



2



Layer 1:

- 1 Pick up 4 s11 seed beads and pass down thru the left side of the next petal and bring thread back up thru the right side and repeat this all the way around the filigree.
- 2 There will be a total of 8 sets of 4, s11 seed beads.



Layer 2:

- 1 Step up thru the 1st s11 seed bead from Layer 1.
- 2 Pick up 1-s15 seed, 1 rondelle and 1-s15 seed. Go thru the 4th s11 seed bead, pass down thru the filigree and come back up thru the top of the next petal.
- 3 Go thru the 1st s11 seed bead of the next set of four and continue this pattern all the way around in each set of 4.



Layer 3:

- 1 Step up thru the s11 seed, the s15 seed and the rondelle, pulling tightly on thread.
- 2 Place the cab in the center, holding it in place tightly with your thumb.
- 3 Pick up 1-s15, 1-s11, 1-s15 and go thru the next rondelle, pulling tightly.
- 4 Repeat this pattern all the way around, coming out of the rondelle where you started.

Note: You may need to pick up 2-s15, 1-s11 and 2-s15 seeds on the top and bottom curves so there is no thread gap.

1



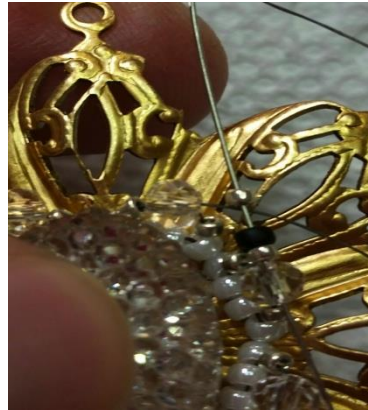
2



3



4



5



Layer 4:

- 1 Step up thru the s15 and s11 seed beads.
- 2 Pick up 1-s15 seed, 1-s11 seed and 1-s15 seed and go thru the next s11 seed bead.
- 3 Repeat this pattern all the way around, pulling tightly, coming out of the s11 seed bead where you started. **(Note: You may need to pick up 2-s15, 1-s11 and 2-s15 seed beads at the top and bottom curves so there is no thread gap.)**
- 4 Go thru all the beads in this layer 2 more times to secure.
- 5 Finish by tying 3 slip knots, go back thru the last 4 seed beads and cut thread.



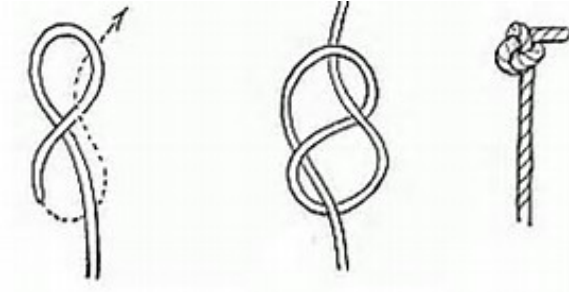
Steps 4 & 5 continued on next page.

4



5

Slip Knot



Congratulations, Your Project is Complete!!

