

Resin Pendant Tutorial

Pat Silber

Materials:

40x30mm B'sue Bezel setting with side walls
Ice Resin (or resin of choice)
Embossing folder (plastic or silicone - no metal)
Easy mold release spray
Fantasy film or other dichroic type shiny paper
Colorants - paints/powders/alcohol inks
Mixing cups (with measurements on the side)
Stir sticks (Popsicle sticks, small plastic spoons, wooden skewers)
Wax paper
Craft sheet
Tray or sturdy cardboard to transport resin safely
Lighter or heat gun
Safety equipment: gloves, mask, eye protection
Pen
Scissors
Paint brushes
Water jar
Beading awl
Plastic container (shoe box size or larger) to cover resin items



Instructions:

**** Safety first! ****

Please wear the proper safety equipment when using Resin – always wear gloves, eye protection and a mask or respirator. Never eat or drink while working with resin.

Gather your supplies and make sure your work surface is covered with paper, waxed paper or a craft sheet. Prepare the embossing folder by spraying with a mold release agent; let dry for about 15 minutes. Place embossing folder on a tray or cardboard.

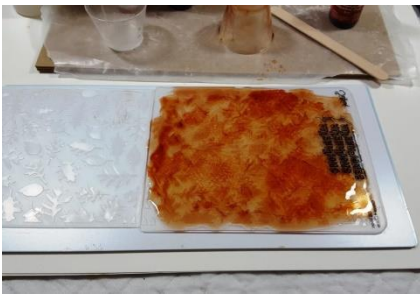


Slowly mix 1 oz of resin (half resin, half hardener) according to manufacturer's directions. Stir resin for at least 3 minutes and let rest for 5 minutes. Resin starts to cure immediately; you will have about 25-30 minutes to work with the resin before it becomes too thick to pour.

Add the inks or paints, for this project I added two drops of rust and ginger alcohol inks and a small drop of Lumiere metallic bronze. Stir the colorants into the resin until just mixed.



Spread the resin over the side of the embossing folder you want to use, if you want a raised detail use the recessed side, if you want a recessed detail use the raised side. For this project I used the recessed side to have the leaves on top. I did add some more alcohol inks to the top of the resin after it was poured for a darker background. Once the resin is spread out let it rest for about 15 minutes and then go over it with a heat source, I use a grill lighter (make sure the alcohol inks are closed and away from any flames). This pops all the bubbles that rise to the surface of the resin, and there will be bubbles. Transport your folder to a level surface and cover with a plastic container to keep dust out (and any little fur babies you may have at home – resin is toxic to us and pets)



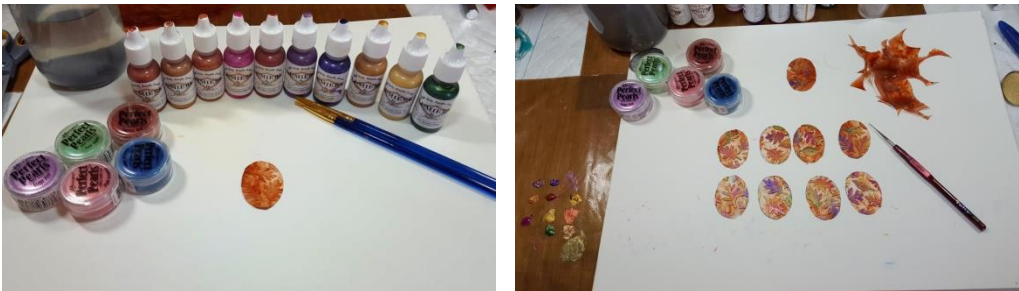
After 12 hours and before 24 hours demold the resin from the folder. You can see the raised details of the leaves. Resin will be shiny on the side that is not touching anything and matte on the side that is touching the folder.



Using a 40x30mm oval bezel pendant trace on outline over the resin and cut out with scissors. Trim the resin to fit inside the bezel snugly. If you cannot get your resin piece out of the bezel use an awl to help lift it out.

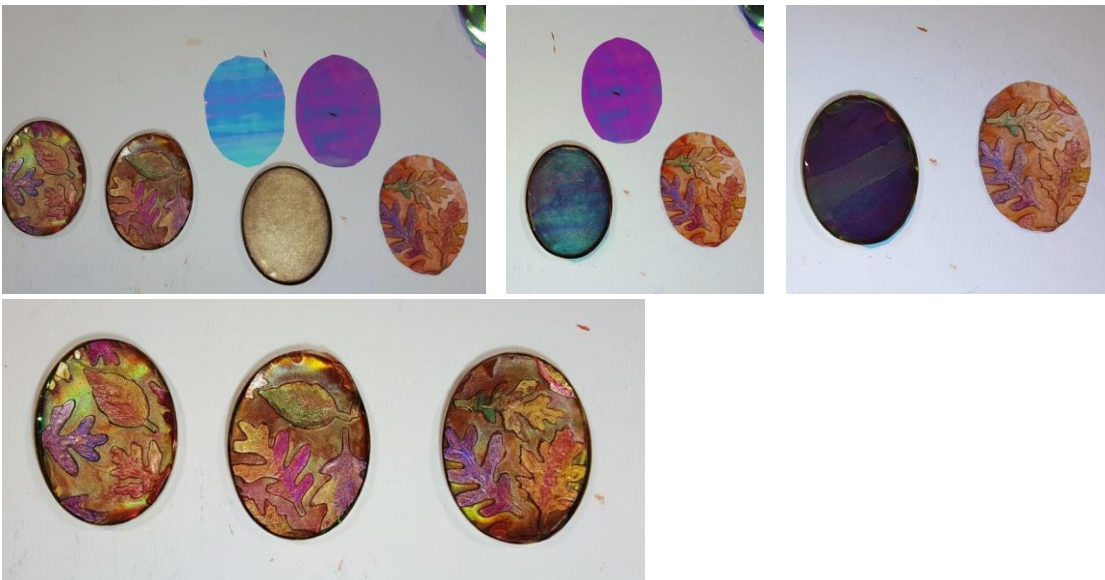


Now it is time for some fun, painting your creation. I used Lumiere paints first and then dusted the background with perfect pearl powders for some extra sparkle.

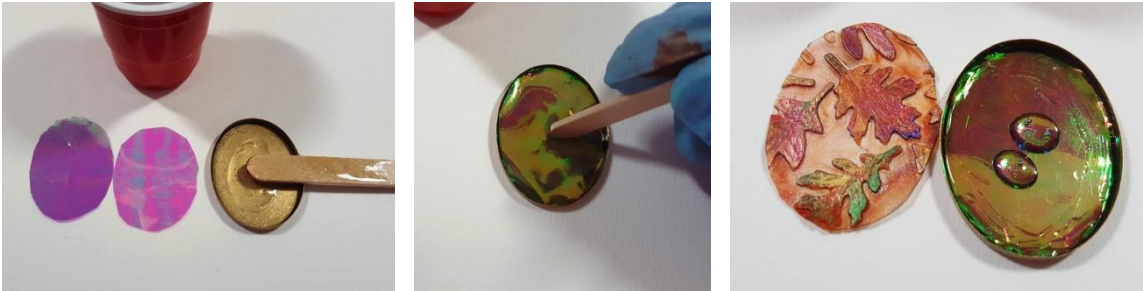


Once the paint on the resin ovals has dried you can stack them in the bezels with some fantasy film (also called Angelina film). I cut out several 40x30mm ovals of different color film, added two of them in the bezel with the resin on top. Two different color layers of the film give you more depth of colors than just one.

At this point you are checking for fit and depth of color – change out the shiny films until you get the colors you want.



Take all pieces out of the bezel and let the resin ovals sit for at least 24 hours; the paint has to be completely dry for the next layer of resin to cure completely. Mix another batch of resin according to manufacturer's instructions; make sure you are wearing your gloves, eye protection and mask. Let it sit for 5 minutes after mixing for 3 minutes. This batch will be left clear. Using the stir stick place a drop into the bezel and spread around a little. Place one layer of film in the bezel and press down so it is flat. Put another drop on top of the first layer and spread around a bit, placing the second film layer on top; press down flat. Add another drop of resin to the top of the second later of film and then add the resin oval; press flat. Make sure there are no bubbles underneath the resin oval, if there are press them to the edge and out.



Add resin in the bezel until it reaches the top of the bezel. After they sit for 15 minutes or so check for bubbles and run a heat source over them. Keep checking every 10 minutes or so and popping bubbles until there are no more. Check once more about an hour after the last check and pop any new bubbles. Transport your bezels to a level surface and cover for at least 24 hours, resist the temptation to touch them – a full resin cure takes 72 hours.



After 72 hours the pendant portion is completed. You can add to a frame or bezel holder of your choice, or use as a cab and embroider around it with beads.

(When the light hits the pendant just right you will get a flash from the shiny paper underneath – 2nd image)

